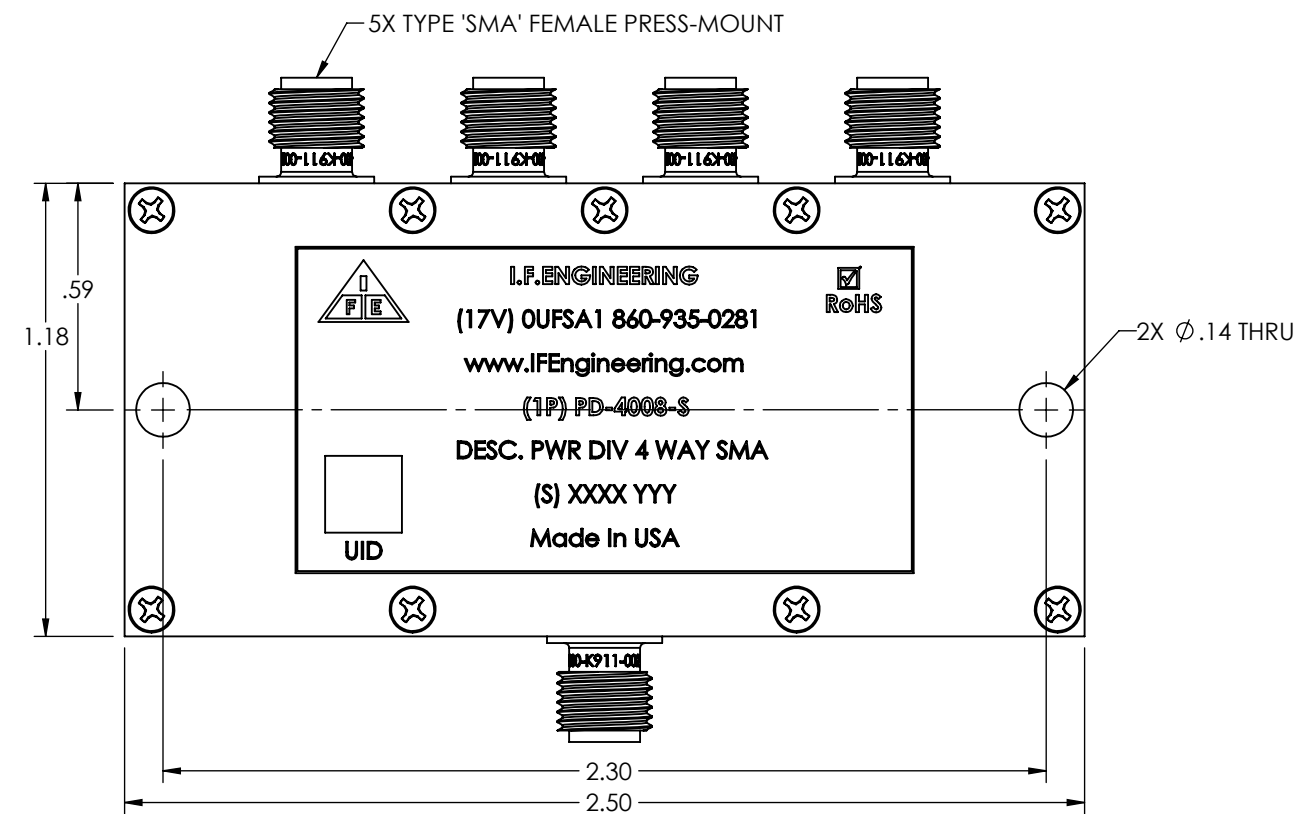
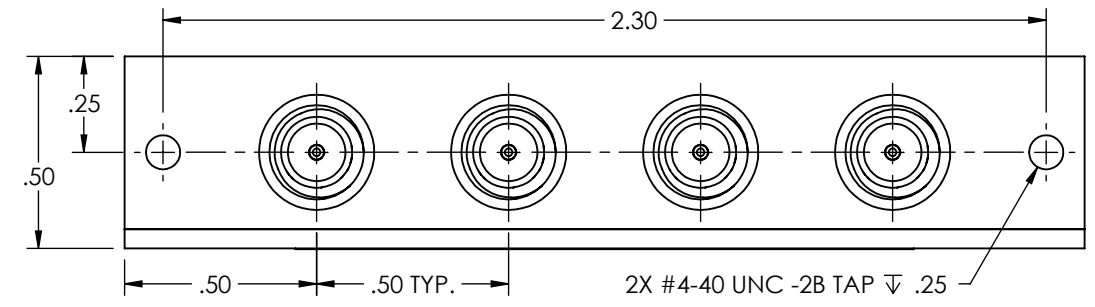
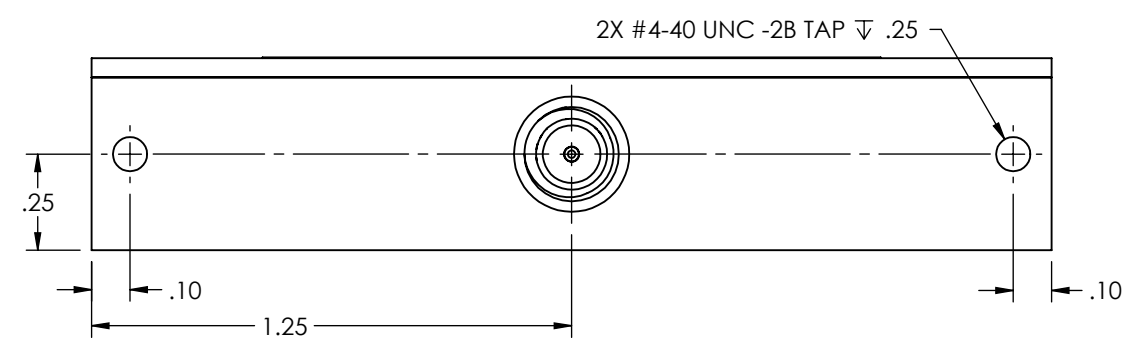


THIS DOCUMENT CONTAINS PROPRIETARY INFORMATION. ANY REPRODUCTION, DISCLOSURE, OR USE OF ITS CONTENTS IS EXPRESSLY PROHIBITED EXCEPT AS AUTHORIZED BY I.F. Engineering Corp

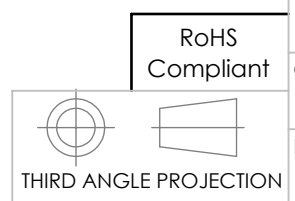
REVISIONS			
REV.	DESCRIPTION	DATE	APPROVED
-	RELEASE	3/7/02	LF
A	SPEC.	6/12/02	
B	ADD MNT HOLES	9/19/03	
C	NEW PACKAGE DESIGN	11/18/03	CJC
D	NEW PACKAGE DESIGN	7/21/04	
E	UPDATED FORMAT & ELEC. SPEC. BLOCK, FINISH CHANGED	9/16/04	MJD
F	REDRAWN (NEW PACKAGE)	12/29/04	MJD
G	CORRECT CHASSIS	6/15/05	CL
H	CHG. TEMP. RANGE	8/2/05	MFD
J	ADDED SCREW HEADS	12/14/05	RJB
K	CHG. TEMP. RANGE; ADDED #4-40 HOLES	9/12/07	MJD
L	REDRAWN, VIEW ADDED; PER ECN 0832002: FINISH CHANGED, 'RoHS Compliant' LOGO ADDED	8/5/08	MJD
M	ECO#1635004	9/2/16	MJD
N	ECO#2203003	1/20/2022	DR



ELECTRICAL SPECIFICATION FOUR WAY POWER DIVIDER	
FREQUENCY RANGE (MHZ)	20-3000
ISOLATION (dB) MIN.	15
INSERTION LOSS (dB) MAX.	2.25
AMPLITUDE BAL. (dB) MAX.	±0.3
PHASE BAL. (°) MAX.	±5.0
VSWR MAX	
IN	1.5:1
OUT	1.3:1
IMPEDANCE (OHMS) NOM.	50
TEMPERATURE RANGE (°C)	-40 TP +70



NOTES:  
 1. MATERIAL: CHASSIS & COVER ALUMINUM.  
 2. FINISH: CLEAR CHROMATE.  
 3. SPECIFICATION SUBJECT TO CHANGE WITHOUT NOTICE.



DRAWN	DATE
LCF	3/7/02
ENG APPD	DATE
MFG APPD	DATE
QA APPD	DATE
RELEASED	DATE
LCF	3/7/02

UNLESS OTHERWISE SPECIFIED  
 DIMENSIONS MEASURED IN INCHES  
 DRAWING PRACTICES PER ASME Y14.5

TOLERANCES ANGLES ±1/2°  
 .XX ±.01 .XXX ±.005

SURFACE ROUGHNESS 63 REMOVE BURRS SHARP EDGES

MATERIAL:

FINISH:

**I.F. ENGINEERING**  
 3 FOSHAY ROAD, DUDLEY MA 01571

TITLE:  
**OUTLINE DRAWING  
 PD-4008-S**

SIZE	CODE IDENT NO.	DRAWING NO.	REV.
<b>B</b>	<b>OUFA1</b>	<b>004-077-181</b>	<b>N</b>

SCALE: 2:1 SHEET: 1 of 1